

RENTAL POWER SOLUTIONS

UNIT # NG 500



SPECIFICATIONS & ADDITIONAL COMPONENTS

Bigg Star's Compact Rental Power Solutions

At Bigg Star, we understand the importance of reliability and performance in power generation. That's why our new power generation units are designed to meet the toughest demands of Canadian industries, providing unmatched runtime in even the harshest conditions.



These units are engineered with attention to every detail, ensuring durability and efficiency. We recognized a gap in the market for prime power generation units built specifically for the extreme Canadian climate. Too often, power solutions fail to meet the needs of industries facing unpredictable weather and high demand for reliable, constant power.

PERFORMANCE

Base Rating	500 kW (670kVa)
Fuel	Natural Gas or Liquid Propane
Prime Output	500kW (670kVa)
Service Type	Continuous Prime Application
Mount	Skid
Voltage Output	480V, 3 Phase
Frequency	60HZ
Power Factor	Load Dependant, 0.8 PF
Packager	Bigg Star Generators Corp.
Year Built	2025

ENGINE

Make	Waukesha
Model	3521 GSI
Cylinders	6 Inline 8:1 Compression Ratio
Displacement	58 liters (3520 CU IN)
Power Ratings	773 HP (577kW) @ 1800 RPM

FUEL CONSUMPTION

100% Rated Load	7900 BTU/bhp-hr
Fuel Connection	Natural Gas - 2" NPTF
Fuel Connection LPG	1/2" NPTF
Emissions	EPA Tier 3

GENERATOR

Make	Stamford
Model	12 Lead, winding 311, PMG Excitation
RPM	1200

RADIATOR

Remote	Yes
Engine Mounted	No
Fan Drive Type	VFD 30 HP 480V Motor

ENCLOSURE/NOISE ATTENUATION

Enclosure	Custom Enclosure
Model	40' Custom Skid
Insulated	Yes
Noise Level	Less than 60dB
Engine Room	Separate Temperature Controlled
Control Room	Separate Temperature Controlled
Radiator	Outside VFD Controlled Fan
Muffler Grade	Hospital Grade

CONTROL SYSTEM AND ELECTRICAL DISTRIBUTION

Main Controller	Deep Sea Electronics Auto Start
Breaker Size	800 AMP
Transformer	15kVa 480 Primary 240 Secondary
Certification	CSA
Lighting	Inside and Outside
Distribution Panel	100 amp

FEATURES

- 120/240VAC Lighting Panel
- 120V Engine Coolant Heater
- 120V Engine Oil Pan Heater
- Engine Oil Level Controller with Custom Day Tank
- Separate Engine, Controls and Radiator Room
- VFD Driven External Radiator Cooler Fan
- Interior Building Exhaust Fans
- Interior Exterior Lighting
- Remote Monitoring

SHIPPING DIMENSIONS

Width	10 ft (3.048 metres)
Length	40 ft (12.2 metres)
Height	10 ft (3.048 metres)
Weight Estimate	26,000 lbs (11,793 kg)

CERTIFICATIONS

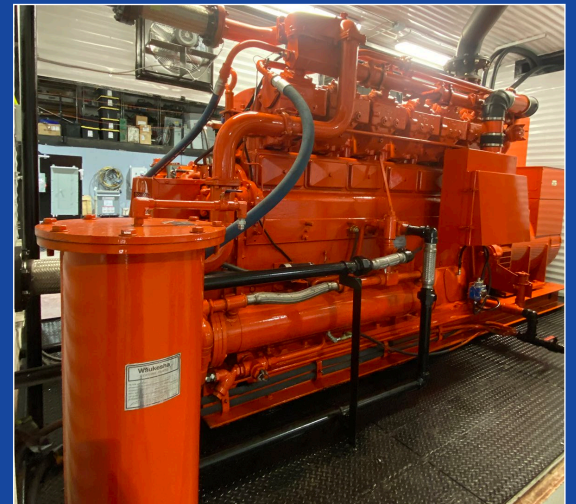
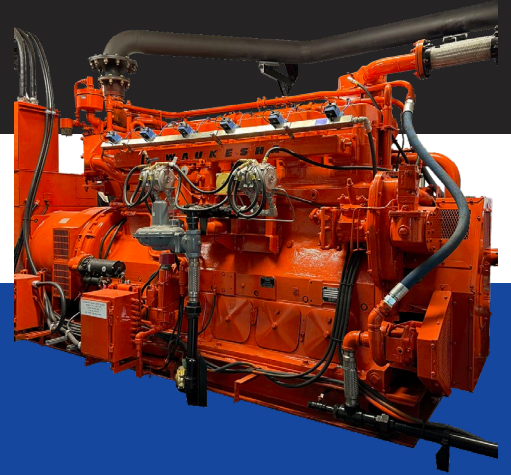
Package	CSA
Area Classification	General Purpose

RENTAL POWER SOLUTIONS



UNIT # NG 500

SPECIFICATIONS & ADDITIONAL COMPONENTS



587.377.3616
www.BigStarGenerators.ca