

RENTAL POWER SOLUTIONS

UNIT # NG 375



SPECIFICATIONS & ADDITIONAL COMPONENTS



Bigg Star's Compact Rental Power Solutions

At Bigg Star, we understand the importance of reliability and performance in power generation. That's why our new power generation units are designed to meet the toughest demands of Canadian industries, providing unmatched runtime in even the harshest conditions.

These units are engineered with attention to every detail, ensuring durability and efficiency. We recognized a gap in the market for prime power generation units built specifically for the extreme Canadian climate. Too often, power solutions fail to meet the needs of industries facing unpredictable weather and high demand for reliable, constant power.

PERFORMANCE

Base Rating	375 kW (468kVa)
Fuel	Natural Gas or Liquid Propane
Prime Output	375kW (468kVa)
Service Type	Continuous Prime Application
Mount	Skid
Voltage Output	480V, 3 Phase
Frequency	60HZ
Power Factor	Load Dependant, 0.8 PF
Packager	Bigg Star Generators Corp.
Year Built	2025

ENGINE

Make	Caterpillar
Model	3412TA
Cylinders	12 Vee 9.7:1 Compression
Displacement	36 liters (1649 CU IN)
Power Ratings	566 HP (425kW) @ 1800 RPM
Compression Ratio	9.7:1

FUEL CONSUMPTION

100% Rated Load	7266 BTU/BHP-HR
Fuel Connection	Natural Gas - 2" NPTF
Fuel Connection LPG	1/2" NPTF
Emissions	EPA Tier 3

GENERATOR

Make	Marathon
Model	12 Lead, winding 311, PMG Excitation
RPM	1800

RADIATOR

Remote	Yes
Engine Mounted	No
Fan Drive Type	VFD 30 HP 480V Motor

ENCLOSURE/NOISE ATTENUATION

Enclosure	40' Sea Container
Model	40' High Cube Container
Insulated	No
Noise Level	Less than 60dB
Muffler Grade	Hospital Grade

CONTROL SYSTEM AND ELECTRICAL DISTRIBUTION

Main Controller	Deep Sea Electronics Auto Start
Breaker Size	800 AMP
Transformer	15kVa 480 Primary 240 Secondary
Certification	CSA
Lighting	Inside and Outside
Distribution Panel	100 amp

FEATURES

- 120/240VAC Lighting Panel
- 120V Engine Coolant Heater
- 120V Engine Oil Pan Heater
- Engine Oil Level Controller with Custom Day Tank
- Separate Engine and Radiator Room

SHIPPING DIMENSIONS

Width	8 ft (2.4384 metres)
Length	40 ft (12.18 metres)
Height	9 ft 6 in (2.8956 metres)
Weight Estimate	18,500 lbs (8,391 kg)

CERTIFICATIONS

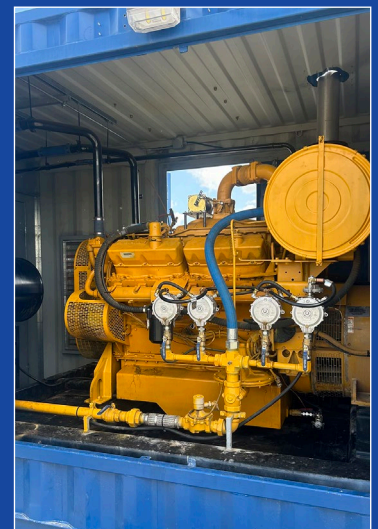
Package	CSA
Area Classification	General Purpose

RENTAL POWER SOLUTIONS



UNIT # NG 375

SPECIFICATIONS & ADDITIONAL COMPONENTS



587.377.3616
www.BigStarGenerators.ca