

RENTAL POWER SOLUTIONS

UNIT # NG 225 SEA CAN ENCLOSURE



SPECIFICATIONS & ADDITIONAL COMPONENTS



Bigg Star's Compact Rental Power Solutions

At Bigg Star, we understand the importance of reliability and performance in power generation. That's why our new power generation units are designed to meet the toughest demands of Canadian industries, providing unmatched runtime in even the harshest conditions.

These units are engineered with attention to every detail, ensuring durability and efficiency. We recognized a gap in the market for prime power generation units built specifically for the extreme Canadian climate. Too often, power solutions fail to meet the needs of industries facing unpredictable weather and high demand for reliable, constant power.

PERFORMANCE

Base Rating	200 kW (250kVa)
Fuel	Natural Gas or Liquid Propane
Prime Output	200kW (250kVa)
Service Type	Continuous Prime Application
Mount	Skid
Voltage Output	480V, 3 Phase
Frequency	60HZ
Power Factor	Load Dependant, 0.8 PF
Packager	Bigg Star Generators Corp.
Year Built	2023

ENGINE

Make	Cummins
Model	GTA855
Cylinders	6 Inline
Displacement	14 liters (855 CU IN)
Power Ratings	286 HP (213kW) @ 1800 RPM
Compression Ratio	8.5:1

FUEL CONSUMPTION

100% Rated Load	7418 BTU/BHP-HR
Fuel Connection	Natural Gas - 2" NPTF
Fuel Connection LPG	1/2" NPTF
Emissions	EPA Tier 3
Fuel Pressure	10 PSI

GENERATOR

Make	Stamford
Model	PMG Excitation, 12 Lead Reconnectable
RPM	1800

RADIATOR

Remote	No
Engine Mounted	Yes
Fan Drive Type	5 HP Electric Motor

ENCLOSURE/NOISE ATTENUATION

Enclosure	20' Sea Container
Model	20' Standard Cube
Insulated	Yes
Noise Level	Less than 80dB
Muffler Grade	Critical Grade

CONTROL SYSTEM AND ELECTRICAL DISTRIBUTION

Main Controller	Deep Sea Electronics Auto Start Controller
Breaker Size	400 AMP
Transformer	No
Certification	CSA
Lighting	Inside Lighting
Distribution Panel	Breaker Customer Connection

FEATURES

- Battery Disconnect Switch
- Coolant Level Sensor
- 120V Engine Oil Pan Heater
- 120V Engine Coolant Heater
- Electronic Governor
- Electronic Altronic Ignition
- Engine Oil Level Controller with Custom Day Tank
- Electric Drive Radiator Fan

SHIPPING DIMENSIONS

Width	8 ft (2.4384 metres)
Length	20 ft (6.096 metres)
Height	8 ft (2.4384 metres)
Weight Estimate	10,500 lbs (4,763 kg)

CERTIFICATIONS

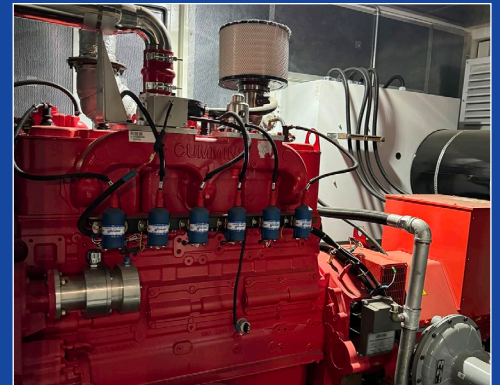
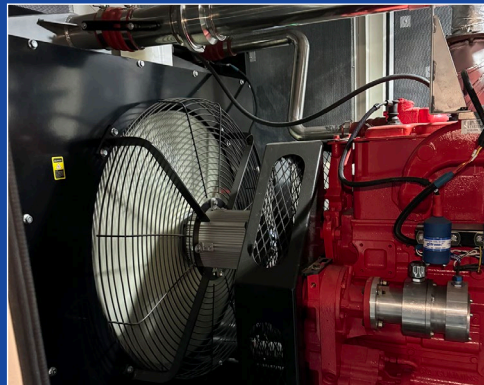
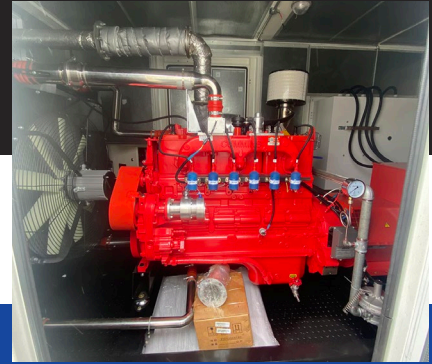
Package	CSA
Area Classification	General Purpose

RENTAL POWER SOLUTIONS



UNIT # NG 225 SEA CAN ENCLOSURE

SPECIFICATIONS & ADDITIONAL COMPONENTS



587.377.3616
www.BigStarGenerators.ca