

# RENTAL POWER SOLUTIONS

## UNIT # NG 170



## SPECIFICATIONS & ADDITIONAL COMPONENTS

### Bigg Star's Canadian Made Compact Rental Power Solutions

At Bigg Star, we understand the importance of reliability and performance in power generation. That's why our new power generation units are designed to meet the toughest demands of Canadian industries, providing unmatched runtime in even the harshest conditions.

These Canadian made, units are engineered with attention to every detail, ensuring durability and efficiency. We recognized a gap in the market for prime power generation units built specifically for the extreme Canadian climate. Too often, power solutions fail to meet the needs of industries facing unpredictable weather and high demand for reliable, constant power.

#### PERFORMANCE

Base Rating	170 kW (212kVa)
Fuel	Natural Gas or Liquid Propane
Prime Output	170kW (212kVa)
Service Type	Continuous Prime Application
Mount	Skid
Voltage Output	480V, 3 Phase
Frequency	60HZ
Power Factor	Load Dependant, 0.8 PF
Packager	Bigg Star Generators Corp.
Year Built	2023

#### ENGINE

Make	Caterpillar
Model	3406TA
Cylinders	6 Inline
Displacement	18 liters (1099 CU IN)
Power Ratings	276 HP (250kW) @ 1800 RPM
Compression Ratio	8.7:1

#### FUEL CONSUMPTION

100% Rated Load	7418 BTU/BHP-HR
Fuel Connection	Natural Gas - 2" NPTF
Fuel Connection LPG	1/2" NPTF
Emissions	EPA Tier 3
Fuel Pressure	10 PSI

#### GENERATOR

Make	Marathon
Model	MagnaPlus
RPM	1800

#### RADIATOR

Remote	Yes
Engine Mounted	No
Fan Drive Type	VFD 15 HP Electric Motor

#### ENCLOSURE/NOISE ATTENUATION

Enclosure	20' Sea Container
Model	20' High Cube
Insulated	No
Noise Level	Less than 70dB
Muffler Grade	Hospital Grade

#### CONTROL SYSTEM AND ELECTRICAL DISTRIBUTION

Main Controller	Caterpillar EMCP
Breaker Size	400 AMP
Transformer	Yes
Certification	CSA
Lighting	Yes
Distribution Panel	Yes

#### FEATURES

- Battery Disconnect Switch
- Coolant Level Sensor
- 120V Engine Coolant Heater
- Electronic Governor
- Electronic Ignition
- Engine Oil Level Controller with Custom Day Tank
- VFD Radiator Fan

#### SHIPPING DIMENSIONS

Width	8 ft (2.4384 metres)
Length	20 ft (6.096 metres)
Height	9 ft 6 in (2.8956 metres)
Weight Estimate	10,500 lbs (4,763 kg)

#### CERTIFICATIONS

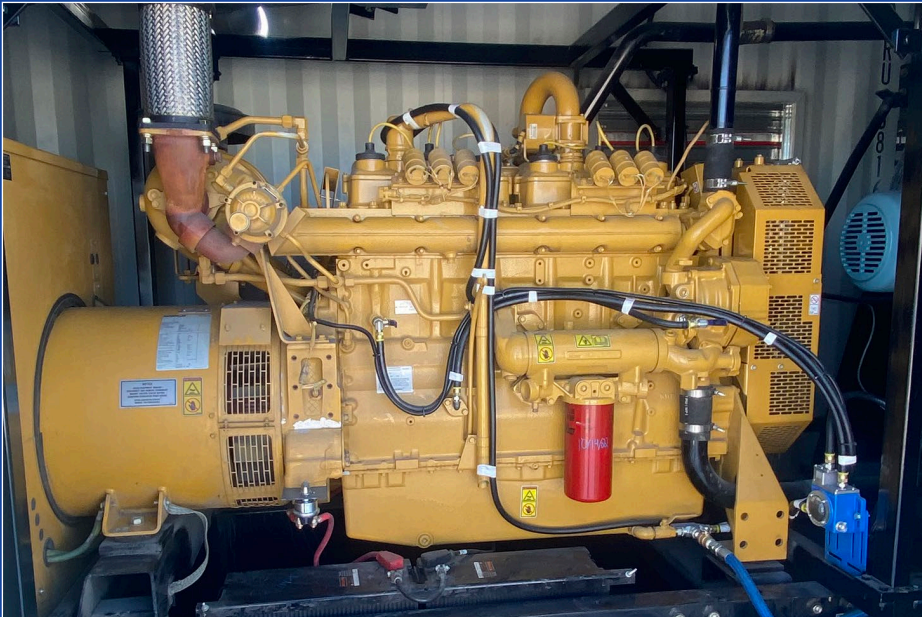
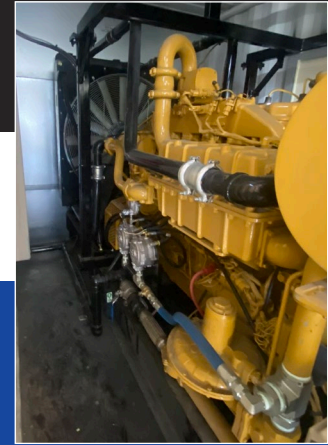
Package	CSA
Area Classification	General Purpose

# RENTAL POWER SOLUTIONS



## UNIT # NG 170

### SPECIFICATIONS & ADDITIONAL COMPONENTS



CATERPILLAR®		Caterpillar Inc. 1100 N.E. Adams Street Peoria, IL 61629 USA	
GENERATOR SET (ISO 8528)			
GENERATOR SET SALES DESCRIPTION			
ENGINE MODEL	G3406		
GENERATOR SET S/N	R7E00308		
SALES ORDER REFERENCE	0FGNM		
YEAR OF MANUFACTURE	2015		
DUTY	CONTINUOUS		
RATED POWER:	212	KVA	
	170	KW	
GENERATOR DATA DESCRIPTION			
RATED VOLTAGE	480	V	
PHASE	3		
WIRE	12	LEAD	
POWER FACTOR	.8	COS $\phi$	
RATED FREQUENCY	60	Hz	
RATED CURRENT	255	A	
RATED RPM	1800	RPM	
GENERATOR CONNECTION	WYE		
CONNECTION CONFIGURATION	Series		
INSULATION CLASS	H		
SUB-TRANSIENT REACTANCE X <sub>d</sub>	1047	PER UNIT	
	1135	OHMS	
TRANSIENT REACTANCE X <sub>d</sub>	1849	PER UNIT	
	2005	OHMS	
SHORT CIRCUIT SUB-TRANSIENT DIRECT AXIS T <sub>d</sub>	0036	SECONDS	
SHORT CIRCUIT TRANSIENT DIRECT AXIS T <sub>d</sub>	1493	SECONDS	
EXCITATION VOLTAGE	29	VOLTS	
EXCITATION CURRENT	5.3	AMPS	
FRAME	447		
ALTITUDE	1000	ft	
NEMA AMBIENT TEMPERATURE	90	°C BY RESISTANCE	
NEMA AMBIENT TEMPERATURE	40	°C	
GENERATOR S/N	GBP00016		
MADE IN	Griffin, GA, USA		



587.377.3616  
www.BigStarGenerators.ca